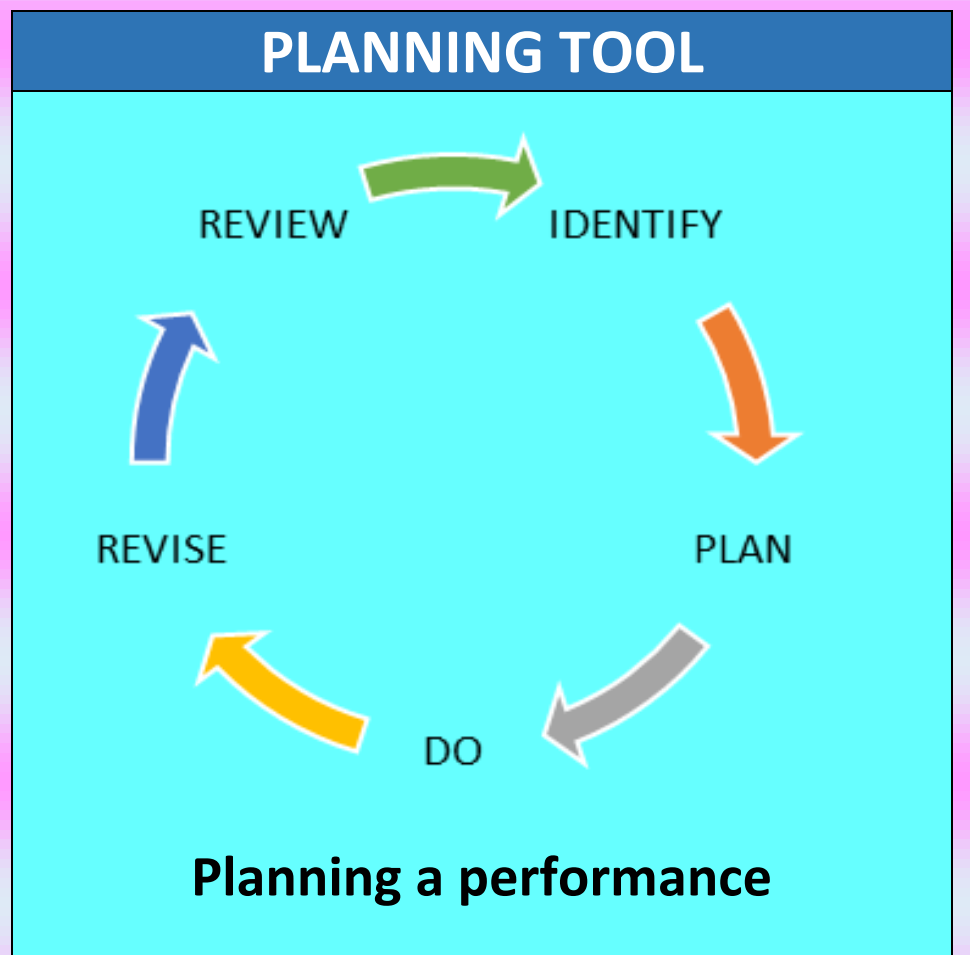
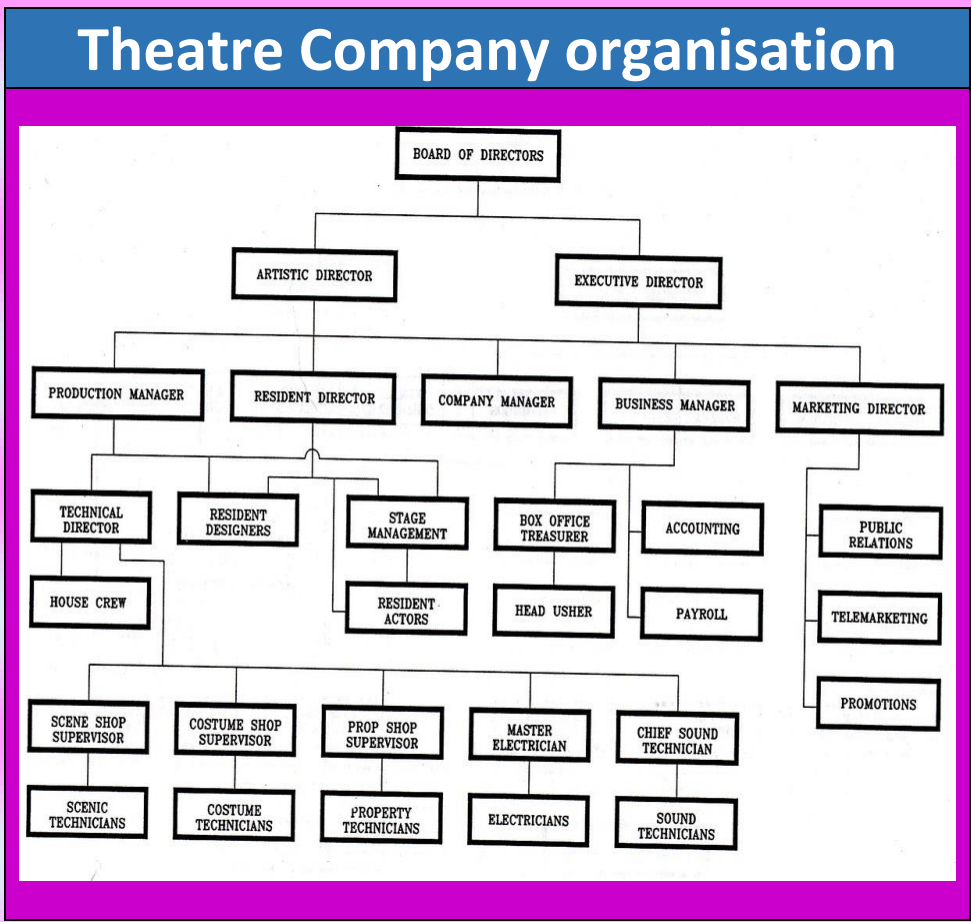




KS4 DRAMA LITERACY MAT

ASSESSMENT AREAS

- SKILLS DEVELOPMENT
- PLANNING & RESEARCH
- PRACTICAL ACTIVITIES
- CONTEXTUAL WORK RELATED
- EVALUATION



CONTEXTUAL WORK RELATED

National Theatre:
<http://www.nationaltheatre.org.uk/discover-more>

Royal Shakespeare Company: <https://www.rsc.org.uk/>

The Marlowe Theatre: <http://www.marlowetheatre.com/>

Sheppey Little Theatre:
<http://www.sheppeylittletheatre.org/>

National Careers Service:
<https://nationalcareersservice.direct.gov.uk>

The Theatres Trust: <http://www.theatrestrust.org.uk>

Creative Choices:
<https://ccskills.org.uk/careers/advice>

Prospects (graduate careers): www.prospects.ac.uk

Stage Management Association:
<http://www.stagemanagementassociation.co.uk>

Association of Lighting Designers: <https://www.ald.org.uk>

Equity: <https://www.equity.org.uk>

The Society of British Theatre Designers:
<http://www.theatredesign.org.uk/>

EVALUATION QUESTIONS

PLANNING/RESEARCH:

- WHAT** DID YOU DO?
- WHY** DID YOU DO IT?
- HOW** DID YOU DO IT?
- WHAT** WOULD YOU DO DIFFERENTLY IF YOU COULD DO IT AGAIN?
- WHY?** WITH REFERENCE TO WHAT YOU WOULD DO DIFFERENTLY?

SKILLS DEVELOPMENT:

- WHAT** SKILLS DID YOU DEVELOP?
- WHY** DID YOU NEED TO DEVELOP THEM? (*Where did you start from?*)
- HOW** DID YOU DEVELOP THE SKILLS? (*What did you do to develop the skills and why?*)
- WHAT** DIFFERENCE DID DEVELOPING THE SKILL(S) MAKE TO THE PERFORMANCE?

AQA PERFORMING ARTS BANDING

- THOROUGH** – Band 1
Complete - with regard to every detail
- GOOD** – Band 2
Having the required qualities
- REASONABLE** – Band 3
Average
- LIMITED** – Band 4
Restricted in extent
- BASIC** – Band 5
Starting point